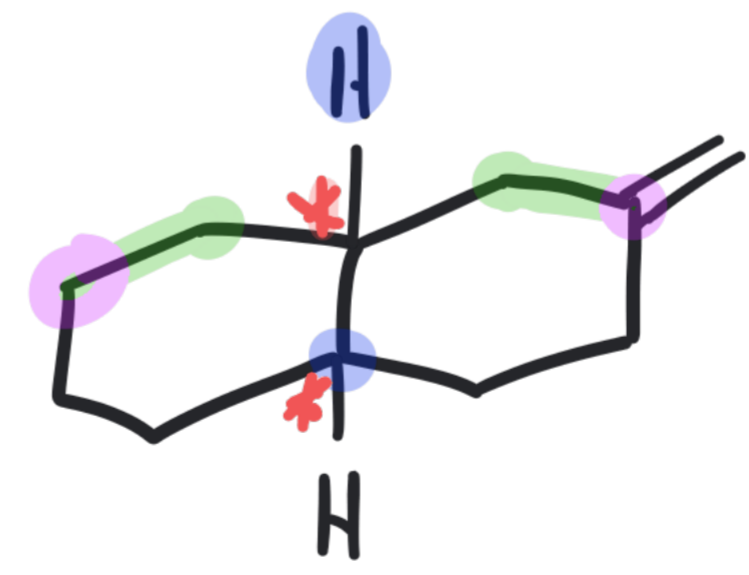
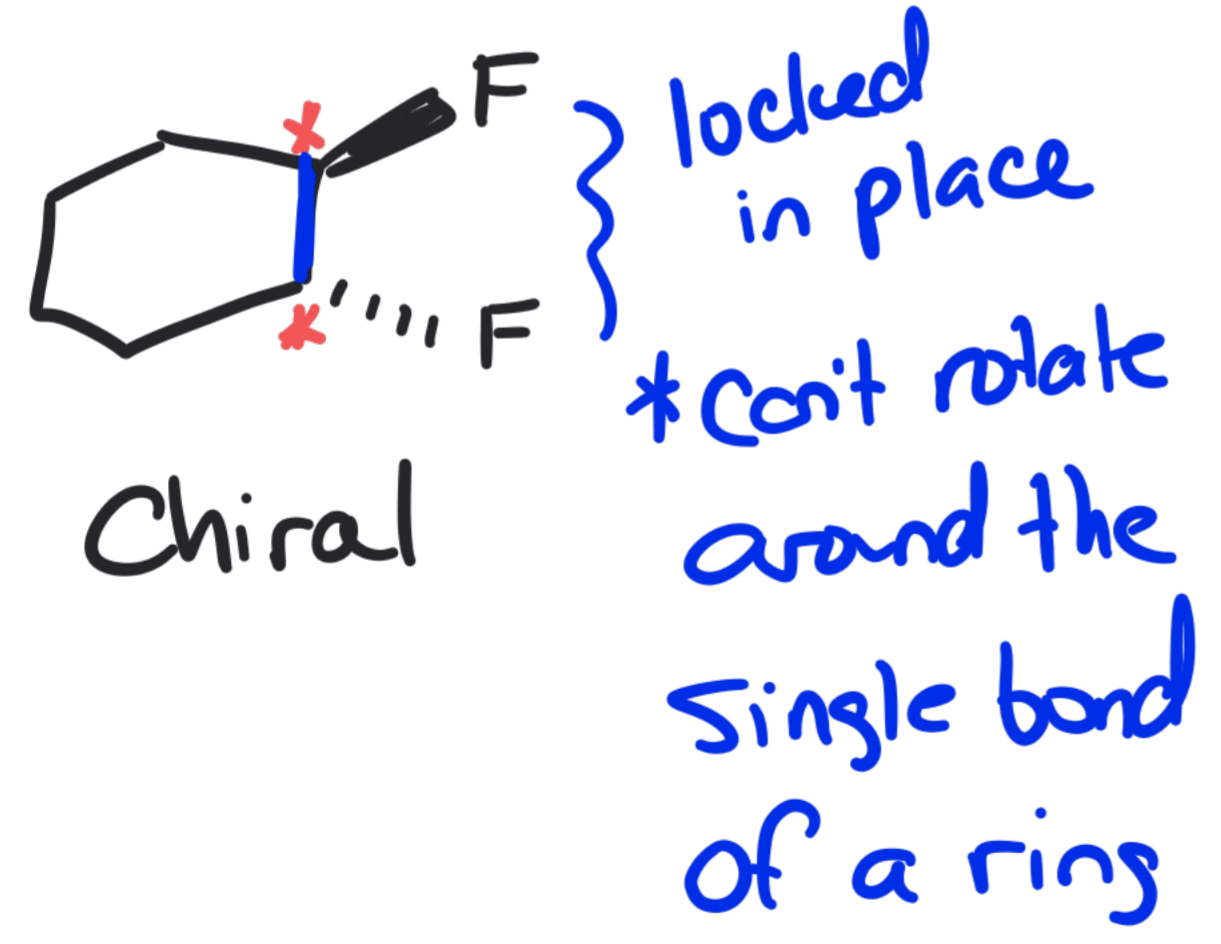
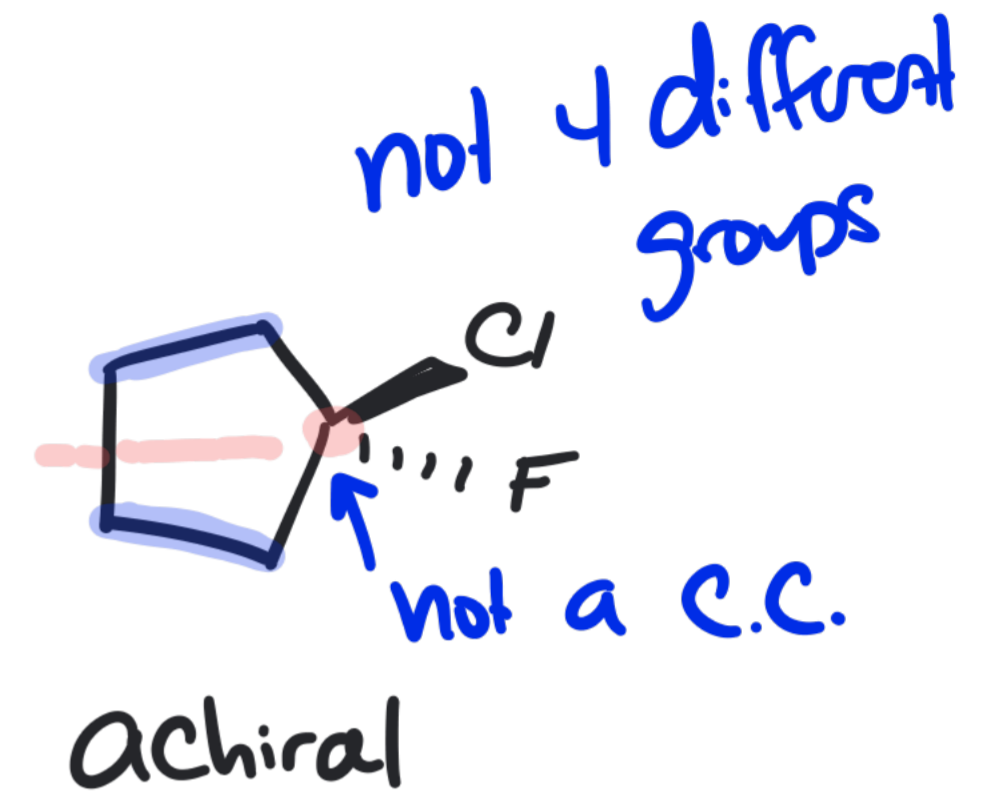
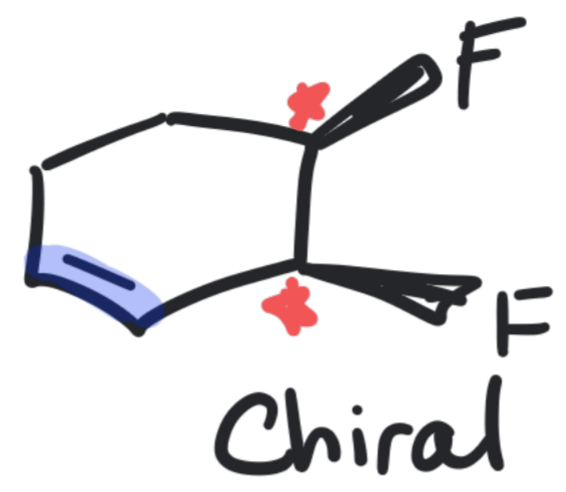
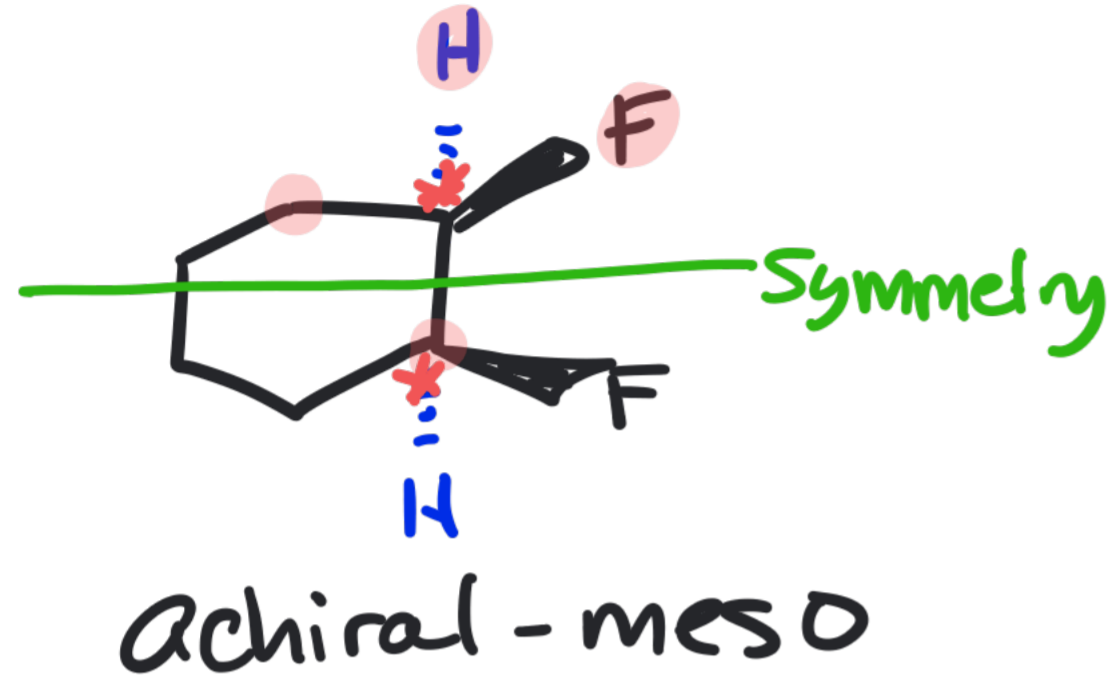
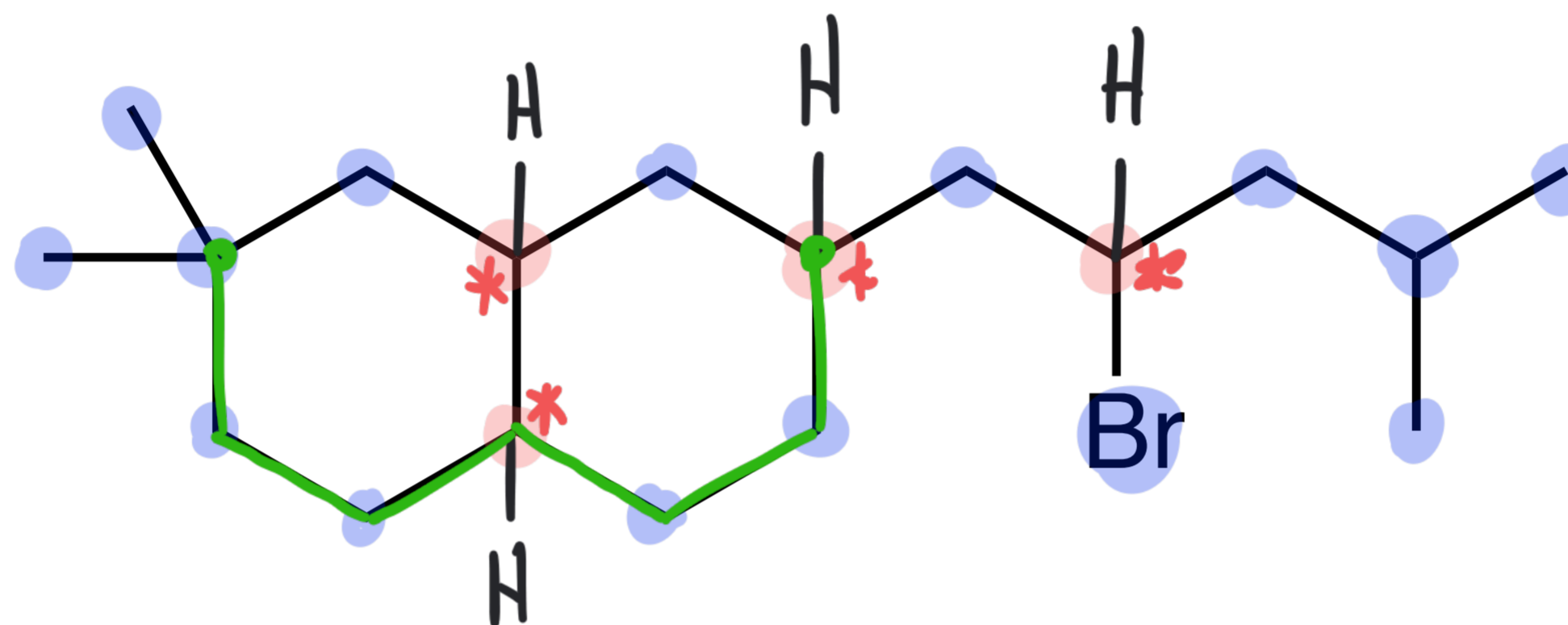


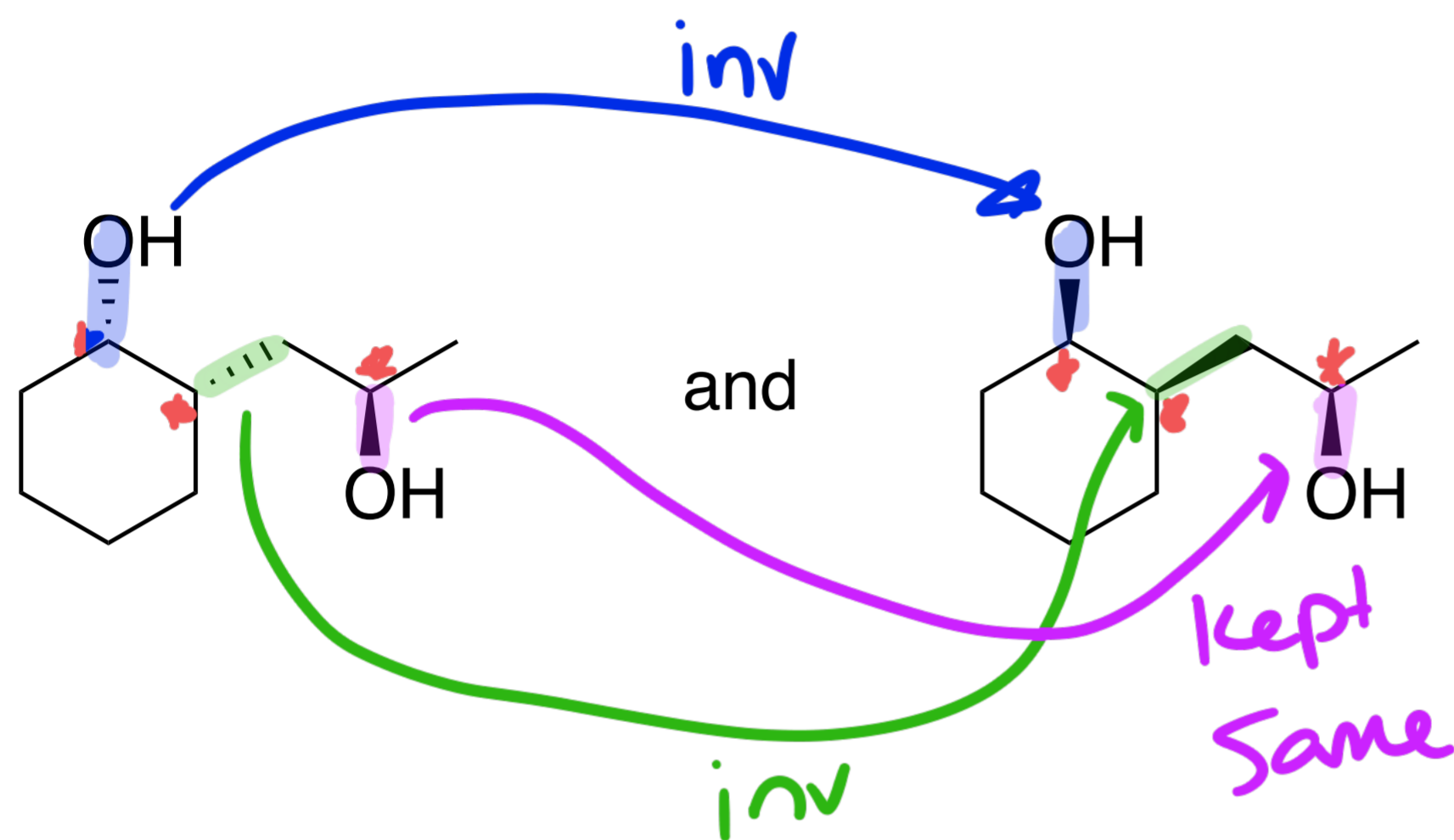
Stereochemistry and Cyclic Compounds



Click on every chiral center in the molecule shown.



What is the relationship between the two molecules?



A. Enantiomers

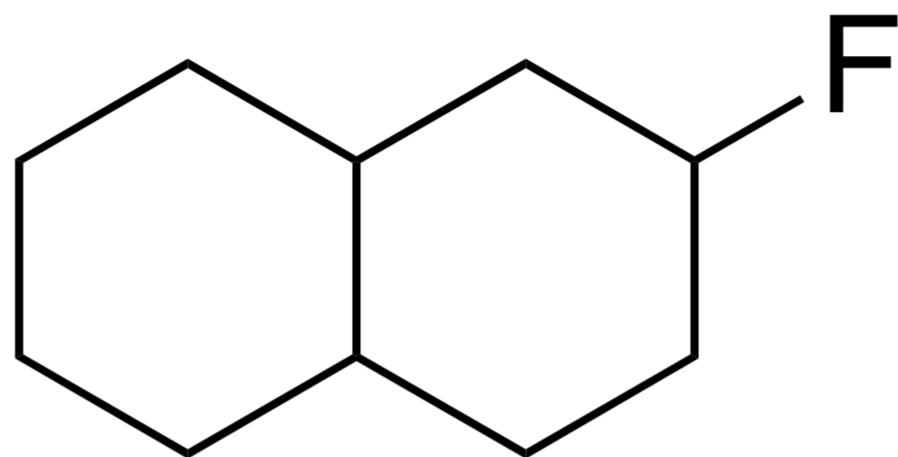
B. Diastereomers

C. Identical

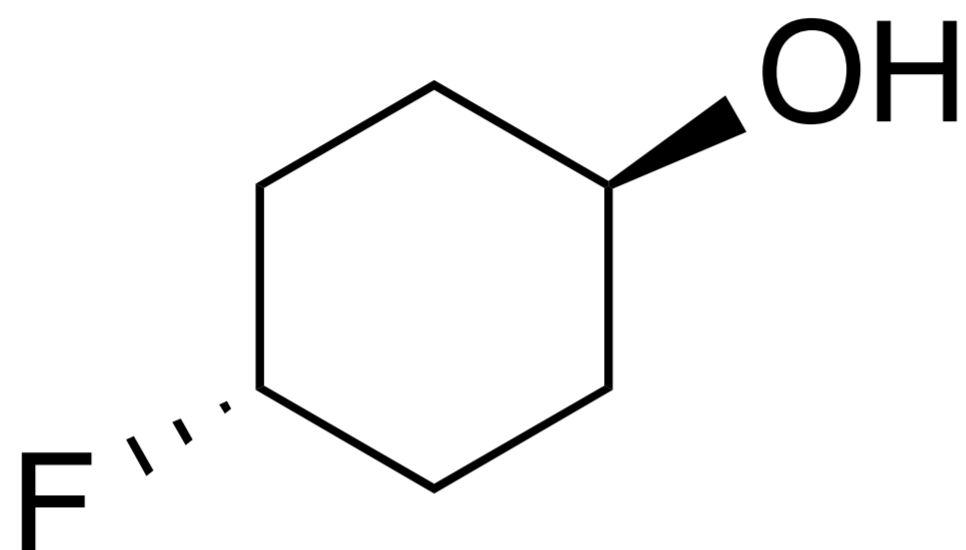
D. Constitutional
Isomers

inverted more than one, but not all the chiral
centres

Click on every chiral center in the molecule below.



How would you best classify the compound shown?



A. Chiral

B. Achiral

C. Meso Achiral

How many chiral centers are in the molecule shown?

